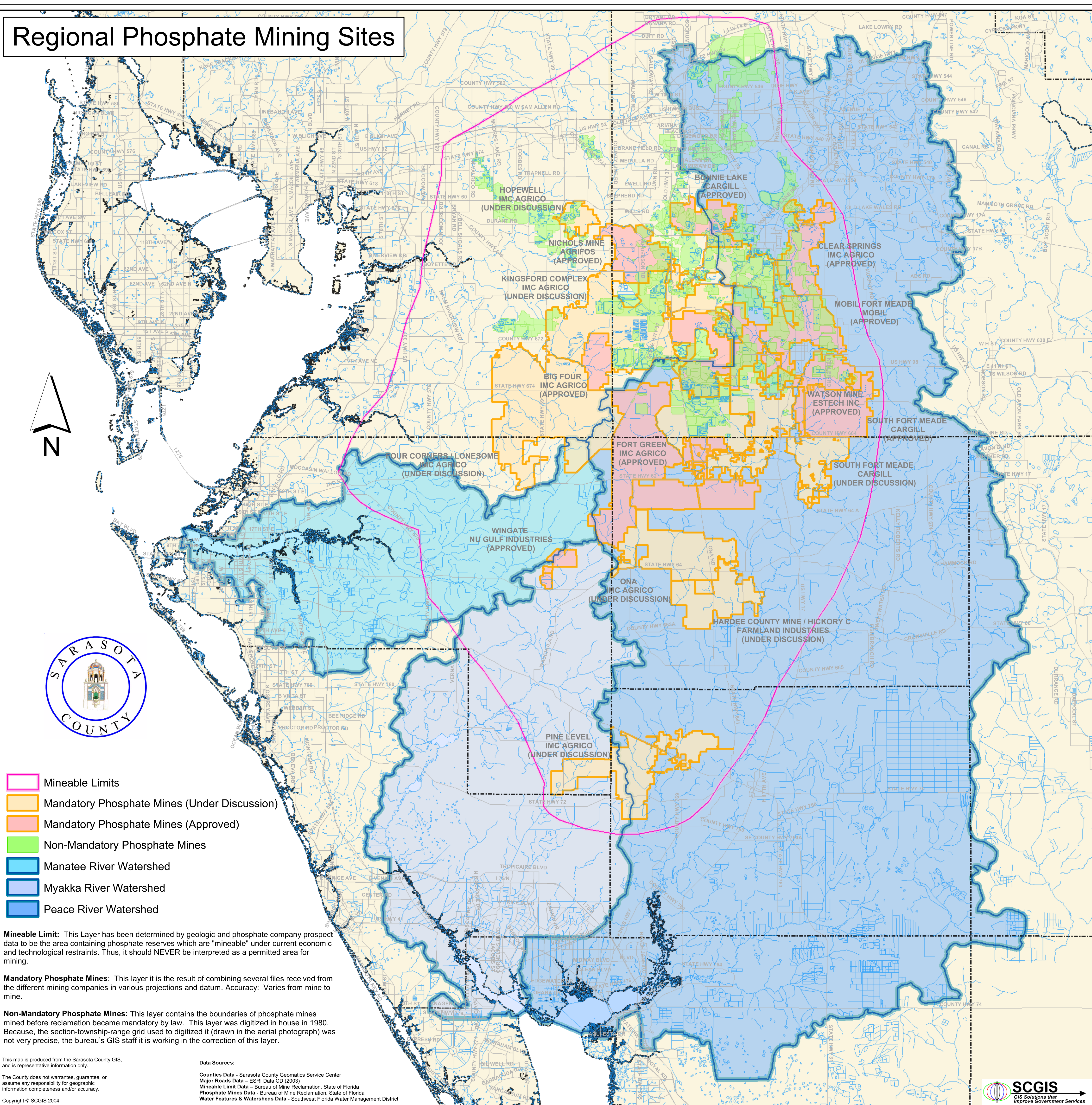


Regional Phosphate Mining Sites



- Mineable Limits
- Mandatory Phosphate Mines (Under Discussion)
- Mandatory Phosphate Mines (Approved)
- Non-Mandatory Phosphate Mines
- Manatee River Watershed
- Myakka River Watershed
- Peace River Watershed

Mineable Limit: This Layer has been determined by geologic and phosphate company prospect data to be the area containing phosphate reserves which are "mineable" under current economic and technological restraints. Thus, it should NEVER be interpreted as a permitted area for mining.

Mandatory Phosphate Mines: This layer is the result of combining several files received from the different mining companies in various projections and datum. Accuracy: Varies from mine to mine.

Non-Mandatory Phosphate Mines: This layer contains the boundaries of phosphate mines mined before reclamation became mandatory by law. This layer was digitized in house in 1980. Because, the section-township-range grid used to digitize it (drawn in the aerial photograph) was not very precise, the bureau's GIS staff it is working in the correction of this layer.

This map is produced from the Sarasota County GIS, and is representative information only.

Data Sources:
 Counties Data - Sarasota County Geomatics Service Center
 Major Roads Data - ESRI Data CD (2003)
 Mineable Limit Data - Bureau of Mine Reclamation, State of Florida
 Phosphate Mines Data - Bureau of Mine Reclamation, State of Florida
 Water Features & Watersheds Data - Southwest Florida Water Management District

The County does not warrant, guarantee, or assume any responsibility for geographic information completeness and/or accuracy.

Copyright © SCGIS 2004

